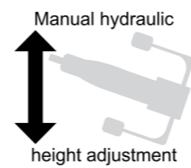


Series 2000XL

2-sectioned versatile treatment tables with hydraulic height adjustment
... for examination, treatment, therapy ...

- Model 2054-00XL/H white powder coated (RAL 9010)
- Model 2054-03XL/H white aluminium powder coated (RAL 9006)
- Model 2054-04XL/H silver aluminium powder coated (RAL 9007)



All pictures:
Model 2054-00XL/H
with option: Movable on
twin castors with central
lock (1180N) (picture
shows chromium-plated
push handle, basic
push handle is RAL
9006 powder coated);
upholstery colour:
64-703 pearl

Basic equipment:

- Table not movable, including height adjustment screws to compensate for uneven ground
- Lying surface inclinable to 12° (Trendelenburg) by gas spring
- Push handle at foot part facilitates the operation of manual inclination, RAL 9006 powder coated
- Long head part with half-round design
- Pedals for foot-controlled height positioning on both sides of the table
- Dewert-hygiene-equipment



Upholstery:

Lying surface 2-sectioned:

- Head part stepless adjustable from 0° to +75° by gas spring (sitting position)
- Length head part: 750 mm
- Fixed foot part
- Length foot part: 1200 mm
- Upholstery thickness: 60 mm



Technical data:

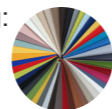
- Manual foot operated height adjustment: 550 mm to 970 mm by a hydraulic pump with a pressure capacity of 10000 N
- Lying surface inclinable to 12° (Trendelenburg) by gas spring
- Width of lying surface: 700 mm, optional 800 mm
- Length of lying surface: 1950 mm
- Load capacity: 250 kg; according to IEC 60601 tested with fourfold static load



Design:

2 different variants for artificial leather eligible for upholstery covering:

- Skai® Pandoria Plus with velvet-smooth surface
- Skai® Toronto EN with innovative staynu-technology



Available as an option (see pricelist for additional options)

Mobility



Art. no. 1120N-10
Movable on comfort twin
castors Ø 100 mm,
each with total lock,
basic height -15 mm



Art. no. 1180N
Movable on twin castors,
Ø 100 mm with central
lock, basic height +20 mm



Art. no. 1185
Movable on comfort twin
castors, Ø 125 mm with
central lock,
basic height + 50 mm



Art. no. 1045N
Wheel-lifting/fixing
mechanism
with 4 foot levers for controlled
lowering



Paper roll holder



Art. no. 1270F/K / 1280F/K
Paper roll holder, mounted under head
part (not protruding),
for width 700 mm / 800 mm

Wall protection bumpers



Art. no. 1175 / 1176
4 wall protection bumpers Ø 150 mm,
including mounting,
for width 700 mm / 800 mm

Nose opening



Art. no. 1610
Nose opening, in head part

Art. no. 1620
Upholstery part to close

Side guards



Art. no. 1080
1 side guard lateral lowerable,
chromium-plated, completely made of
steel tube, length: 1060 mm

Upholstery options

Art. no. 2054-800
Width of upholstery 800 mm

Art. no. 1770 / 1780
Soft covering for pleasant resting comfort,
for width 700 mm / 800 mm,
thickness 80 mm

Art. no. 1772 / 1782
Upholstery medium-soft (cold foam cover),
for width 700 mm / 800 mm,
thickness 70 mm