



# Tilt table for echocardiography

## Tilt table with electric motorized height adjustment and tilt function

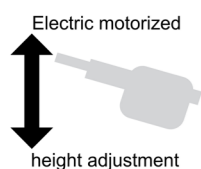
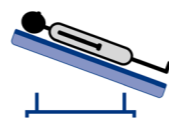
... for examination, treatment ...

Model 2095-00E white powder coated (RAL 9010)

Model 2095-03E white aluminium powder coated (RAL 9006)

Model 2095-04E grey aluminium powder coated (RAL 9007)

All pictures:  
Model 2095-00E  
with options:  
1 pair of belt guides  
(2090-036), 1 safety belt with  
automatic lock (2090-0351),  
upholstery for strap (2090-034);  
upholstery colour: 64-702 white



### Basic equipment:

- Lying surface 2-sectioned, cut-out for echocardiography with upholstery part to close in head part
- Operation of electric motorized height adjustment by foot switch, operation of electric motorized tilt function by hand switch (independent from each other)
- Integrated safety function for automatic blocking of electromotive drive
- Height adjustment by electromotive drive with freewheeling downwards, automatic declutch in case of resistance
- Plug connector for potential equalization in acc. to DIN 42801
- Movable on 4 twin castors Ø 75 mm, each with lock
- Foot plate to stand on (upholstered), removable
- Side rails along lying surface (left and right side) for special tilt table equipment
- Dewert-hygiene-equipment

### Upholstery:

Lying surface 2-sectioned:

- Head part stepless adjustable from 0° to +45° by gas spring, length head part: 800 mm
- In head part: Cut-out for echocardiography, measures: Length 300 mm x Width 250 mm
- Cut-out for echocardiography and upholstery part to close (in patient supine position left)
- Fixed foot part, length foot part: 1130 mm
- Thickness of upholstery: 80 mm

### Technical data:

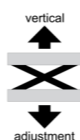
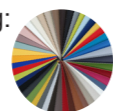
- Electric motorized height adjustment: 620 mm to 930 mm in 34 sec. by AC-Motor, pressure capacity of 10.000 N
- Electric motorized tilt function from 0° to +85° in 22 sec. by AC-Motor with a pressure capacity of 10000 N
- Width of lying surface: 700 mm | Width overall: 850 mm
- Length of lying surface: 1930 mm | Length overall: 1960 mm
- Load capacity: 180 kg; according to IEC 60601 tested with fourfold static load



### Design:

2 different variants for artificial leather eligible for upholstery covering:

- Skai@ Pandoria Plus with velvet-smooth surface
- Skai@ Toronto EN with innovative staynu-technology



Available as an option (see pricelist for additional options)

### Additional motor control options



Art. no. 1920E  
Hand switch (low voltage),  
with magnet on the back to  
fasten



Art. no. 1910E  
1 foot switch (low voltage)

### Grip handles



Art. no. 2090-028  
1 pair grip handles, small

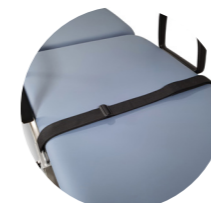


Art. no. 2090-038  
1 pair grip handles, big

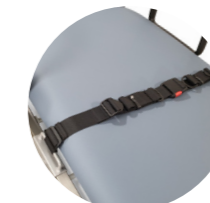
### Belt elements



Art. no. 2090-034  
Upholstery for strap



Art. no. 2090-035  
1 safety belt with velcro fastener



Art. no. 2090-0351  
1 safety belt with automatic  
lock



Art. no. 2090-036  
1 pair belt guides

### Arm rest



Art. no. 2090-0143  
Attachment clamp to fix  
arm rest at side rail



Art. no. 2090-059  
Arm rest

### Paper roll holder



Art. no. 1272  
Paper roll holder, mounted under head  
part (not protruding)

### Special equipment



Art. no. 2090-090  
Angle gauge, on both sides  
of the table



Attention: necessary room height: 2.45 m

Updated 04.2023\_01  
changes concerning the technical data are subject to change